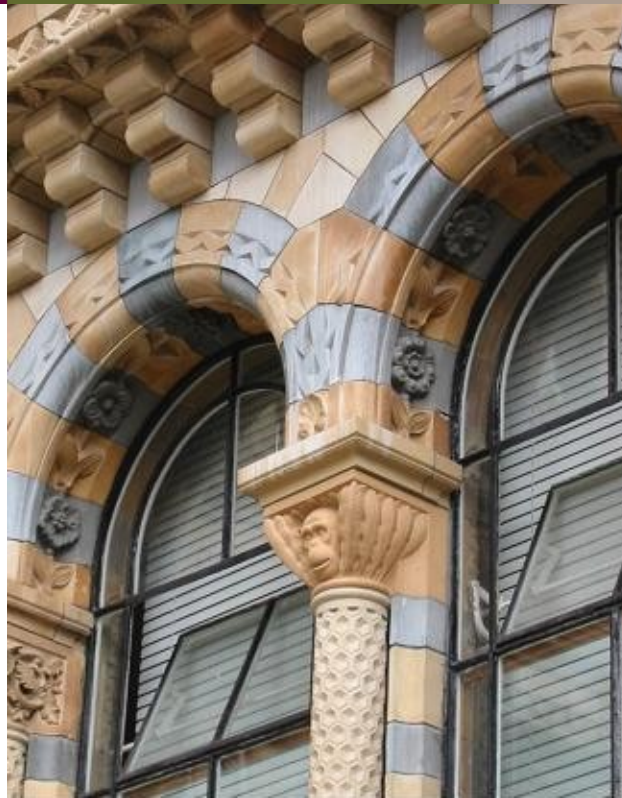


CASE STUDY – *Natural History Museum – The Primate Capital*

- **Client:**
The Trustees of Natural History Museum
- **Building Surveyor:**
Hamson Partnership
- **Principal Contractor:**
Stonewest Limited
- **Value:** £10K
- **Date:** 2002



Description

The Natural History Museum is famous for its unique terracotta animal sculptures.

The works involved:

- Normally terracotta work here is concerned with either conserving the original fabric or, if this is not possible, to replicate it. This project was a unique departure as the chimpanzee piece was a completely original sculpture.
- Clay models had to be produced prior to the firing process in which the model shrank by some 8% as the material dried out.
- Stonewest was tasked with ensuring the new chimpanzee fitted the original opening.
- 'Kid gloves' were required for the delicate installation process from an aerial mounted platform.